

WELCOME TO THE EAST ISLIP MIDDLE SCHOOL!

August 2019

Dear Incoming 6th Grade Students and Parents,

We hope you are enjoying a wonderful summer vacation!

Orientation for our incoming 6th grade students will be held on Thursday, August 29th at 8:00 AM. This program is for **STUDENTS ONLY** and will begin with a meet and greet breakfast in the cafeteria hosted by our PTA. After the breakfast, students will be brought to the auditorium for an assembly program by Kym Laube from HUGS. The assembly program will focus on good citizenship, responsible use of electronic devices and healthy choices. Finally, the students will meet with their guidance counselors and receive their schedules. Members of our NJHS will then take the students on tours of the building. We anticipate the program ending at approximately 11:00 AM. Please note that the building will remain open from 11:00 AM until 2:00 PM, so that parents can visit the school with their children to help set up their lockers. For your convenience, a middle school building map is included with this letter. Students are encouraged to highlight their classrooms on the map to help make them easier to find.

First Day of School

School begins on **Thursday, September 5, 2019** with a regular “A” day schedule. Your school day begins at 7:54 am with Period 1. Upon arrival, sixth grade students will enter the building through the doors near the auxiliary gym on the west side of the building or the north cafeteria doors on the east side of the building and report directly to the cafeteria. Students will be dismissed from the cafeteria to first period at 7:47 am.

Breakfast/Lunch/Home Baked Goods

The cafeteria will be open for breakfast from 7:00 – 7:40 am. You may purchase breakfast for \$.75 and lunch for \$2.20/\$3.00. Please do not drop off any “outside food” for your child during the day for their lunch period i.e.; McDonald’s, pizza, etc. To help ensure the health and safety of all students in the building, home baked goods or prepared goods including but not limited to cupcakes, cookies, etc. are not permitted to be distributed during the school day. Thanking you in advance for your cooperation.

Transportation Information

Bus students

Student transportation services for the 2018-19 school year will continue to be based on the following Board of Education walker/rider policy (#8410) limits:

- Grades K-3, inclusive, shall be provided transportation if students live more than one half (1/2) mile from school.
- Grades 4-6, inclusive, shall be provided transportation if students live more than one (1) mile from school.
- Grades 7-12, inclusive, shall be provided transportation if students live more than one and one-half (1 ½) miles from school.

Students using bus transportation will receive passes in the mail from the transportation department.

Please be reminded that students are only allowed to ride the bus that they are specifically assigned to. Drivers will be checking bus passes to ensure this procedure is adhered to. Please contact the Principal's Office with any concerns or questions that may arise during the school year.

There is an exclusive bus entrance/exit both before and after school on the west side of the building for bus drop-off and pick-up. In the morning, 6th grade students will enter the building near the auxiliary gym and the 7th and 8th grade students will enter through the library lobby doors.

Walkers or Bicycle Riders

If you ride a bicycle to school, a bicycle rack is available next to the school near the bus loop. You are responsible for properly securing your bicycle.

Students who walk may enter the building through the entrances on the east or west side of the building. Students are prohibited from walking behind the building.

Parent Drop Off/Pick Up

Arrival

Please note the arrival and dismissal procedures; student safety is our primary concern and your assistance will be appreciated.

All 6th grade students should be dropped off on the east side of the building and will be entering through the north cafeteria doors. The doors will be opened at 7:15 am. It is important that we keep traffic flowing. Therefore, drive as far forward as possible towards the cafeteria when dropping off your child from the passenger side of the vehicle. Please be courteous of other parents at drop-off time. The front driveway is used for minibus, handicapped and visitor access only. Visitors and late arrivals (after 7:54 am) must enter the building via the main entrance and report to the main lobby desk where they must sign in. If a student becomes injured during the school year, special arrangements for arrival and/or dismissal will be made through the nurse's office.

Dismissal

If you plan on picking your child up after school, please be reminded that there is no stopping on Redmen Street. Parents can begin to line up on the cafeteria (east) side of the building in the middle school parking lot. Please adhere to the directions of the security personnel by pulling ahead to allow several vehicles the opportunity to wait in line for student dismissal at 2:32 pm. For your child's safety do not park in a stall and require your child to walk across the parking lot. Please do not pick-up on the west side of the building near the district office.

The Afternoon Extra Help Bus

In the afternoon, there will be three 3:30 pm. extra help buses. One will be exclusively for those 6th graders that live between 1 and 1½ miles from school. This mini bus will have a placard in the window indicating grade 6. The other two buses #4 & #12 will be available for students in grades 6-12 that live beyond 1 ½ miles from school. Students will need to obtain an extra help bus pass from their teachers before they are allowed to ride the bus. The extra help bus stops are different from the regular bus stops. These stops are posted in various places around the building.

Important Information

Three very important items have been posted on the middle school website or mailed to your home that requires your review. These must be signed and returned to your child's 1st period teacher no later than Friday, September 6, 2019.

- Breakfast/Lunch Free/Reduced Lunch Application (mailed)
- East Islip School District School/Parent Compact
- Summary of the Food Allergies Policy

Please check the Middle School's *Virtual Backpack* for the following important documents:

- Superintendent's Welcome back Letter
- Manners Matter
- Code of Conduct
- Computer Network for Education Letter
- East Islip School District School/Parent Compact (*sign and return to homeroom teacher*)
- Immunization Requirements
- Summary of the Food Allergies Policy (*sign and return to homeroom teacher*)
- Districtwide Committee Application
- PTA Information
- eiMAPS
- Important Dates Reminder

Documents

If you have any updated legal documents pertaining to guardianship, please submit them to the Principal's Office as soon as possible.

Meet the Teacher Night

Our **Meet-the-Teacher Night** will be held on Thursday, September 12, 2019. Our program will begin at 6:30 pm. Please save this date, we will be following a B-day schedule.

Honor Roll

In an effort to encourage our students to strive for their personal best, we have established criteria to achieve honor roll status at the East Islip Middle School. The criteria are as follows:

- Honor Roll – 90 – 93.99 and no grade less than 70
- High Honor Roll – 94 – 100 and no grade less than 70

Health Office Reminders

New York State Health Law has amended immunization requirements for all students who are entering 6th grade. Students who are 11 years old and entering grade 6 in September must have proof of receiving the Tdap. Students who are 10 years old and entering grade 6 in September will be flagged and must receive the Tdap within 2 weeks of their 11th birthday. All students must also show proof of having received a second chickenpox (Varicella) and fourth polio vaccine.

We look forward to greeting you on **August 29th** at our 6th grade orientation. Please view our website to see the supply lists for the upcoming school year. Utilize our website throughout the school year to see regular updates of school, district-wide events and important information.

Very truly yours,

William Brennen
Principal

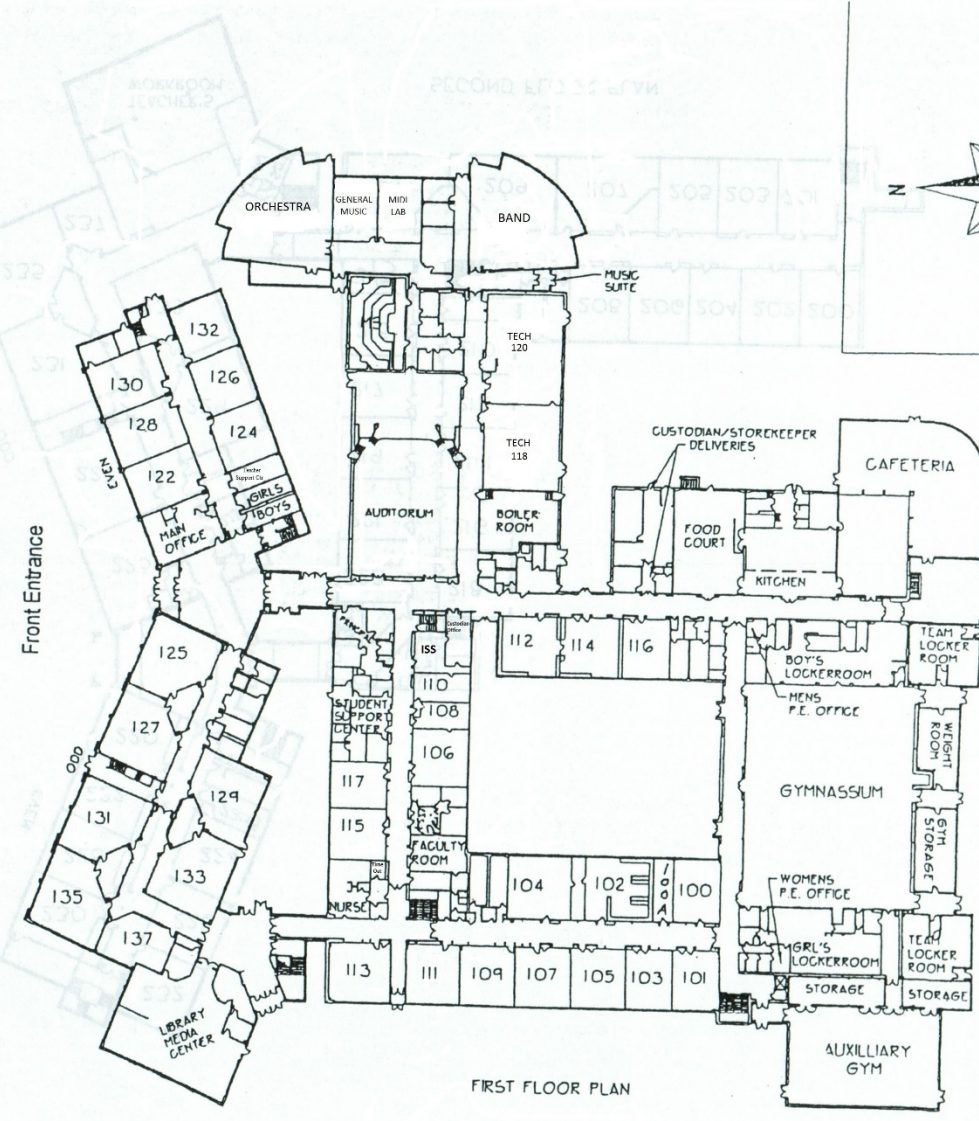
Jason Stanton

Michael Thorley

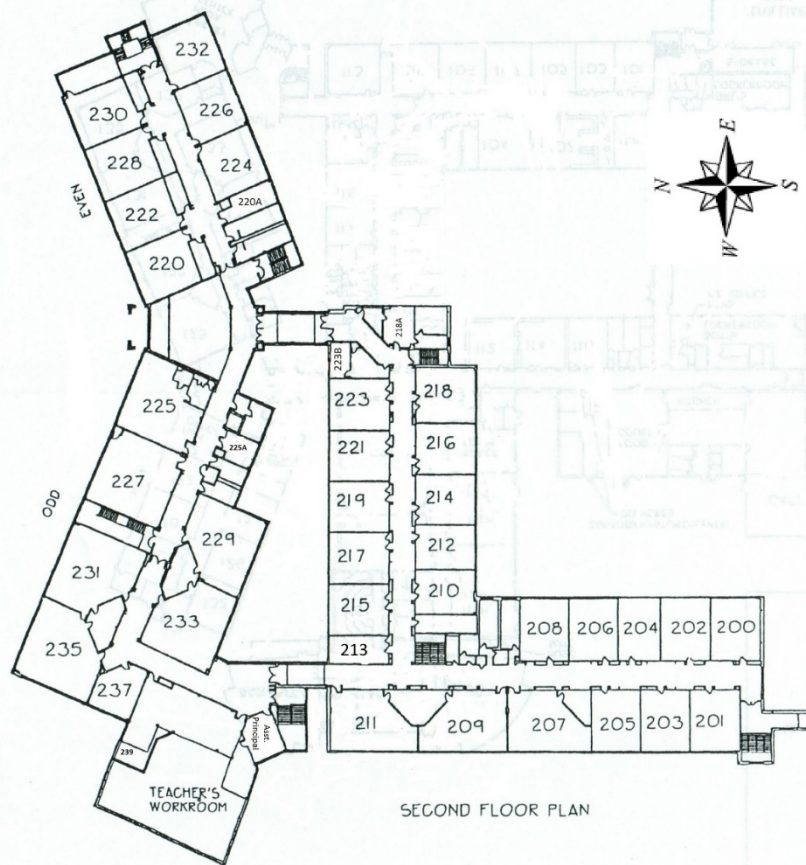


Assistant Principal
Assistant Principal

EAST ISLIP
MIDDLE SCHOOL



FIRST FLOOR PLAN



SECOND FLOOR PLAN